



# Kent Sail Race

## North Star Sail Club

### Saturday, August 24, 2019

### SAILING INSTRUCTIONS



Special thanks to the Kent Sail Company for their generous support of this race.

#### 1. RULES

This race will be governed by the rules as defined in *The Racing Rules of Sailing* (RRS) and as modified by the 2019 Anchor Bay Yacht Racing Association (ABYRA) Handbook and its addenda, this race's Notice of Race, and these Sailing Instructions.

#### 2. NOTICES TO COMPETITORS

Notices to competitors will be posted on the official notice board located on Yachtscoring Website. These notices may also be posted at the North Star Sail Club (NSSC) clubhouse, located in a freestanding case to the west of the parking lot side of the clubhouse.

#### 3. CHANGES TO SAILING INSTRUCTIONS

Changes to Sailing Instructions will be posted on the official notice board before 1030 on Saturday, August 24, except that any change to the schedule of the race will be posted by 2100 on Friday, August 23. Per RRS 90.2(c), when RC flies Code "L" flag, ("come within hail"), verbal changes may be given altering any part of these instructions.

#### 4. SIGNALS MADE ASHORE

Signals made ashore will be displayed at the NSSC flag pole. When flag AP is displayed ashore, "1 minute" is replaced with "not less than 30 minutes" in the race signal AP.

#### 5. SCHEDULE

The warning signal for the first start is scheduled for 1230 on Saturday, August 24. It will be preceded by one minute by a sequence alert, which will consist of multiple sounds.

#### 6. CLASSES

Class splits will be posted on the official notice board. Class flags are assigned to the following order of start:

First Start	Pink
Second Start	Green
Third Start	Gold
Fourth Start	Purple

#### 7. RACING AREA

The racing area will be Anchor Bay, Lake St. Clair. The starting area will be at CR1 at the end of the Clinton River Channel.

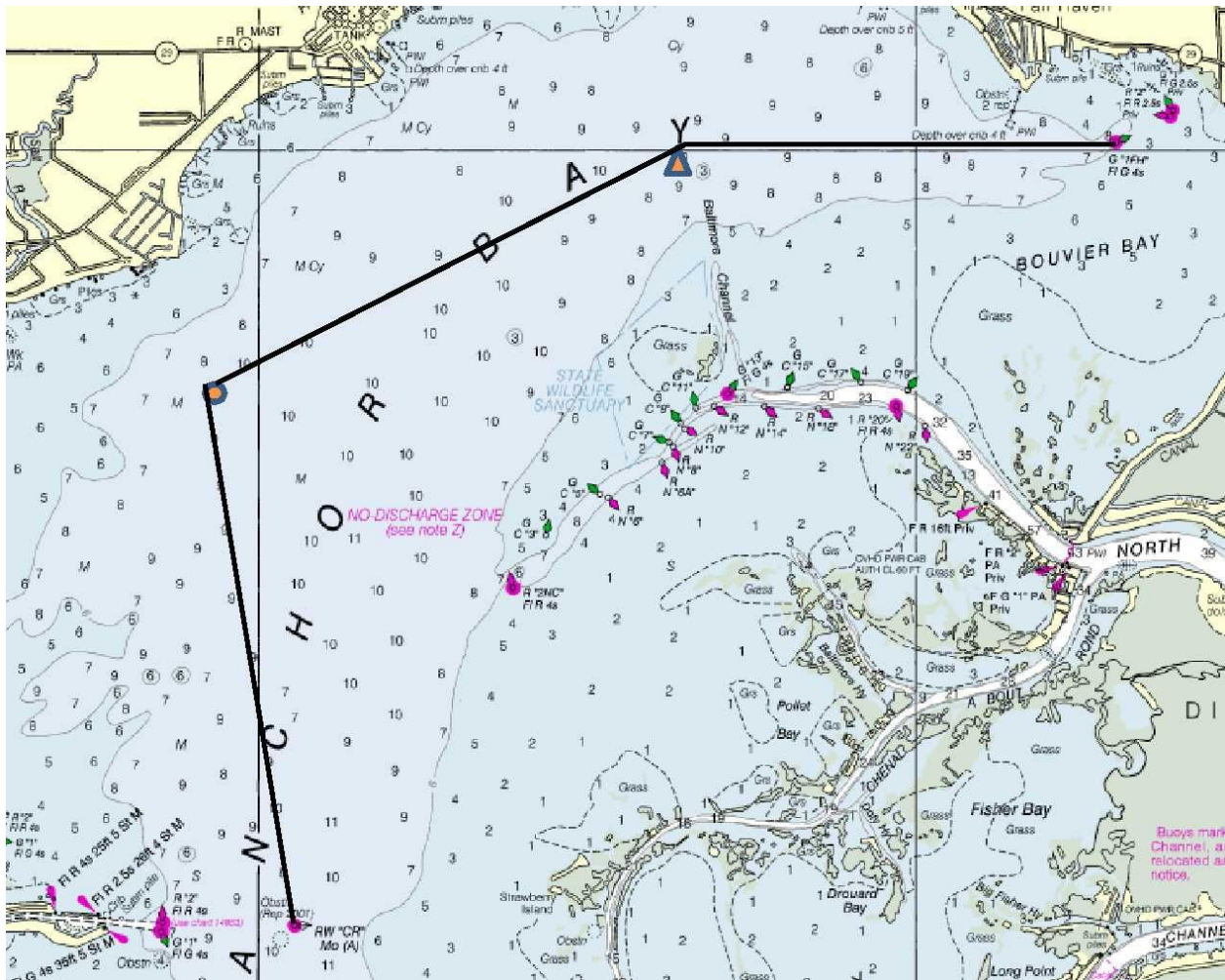
## 8. COURSE

The course will start at CR1 at the end of the Clinton River Channel, leave ABYRA C racing mark to starboard, leave an inflatable orange mark to starboard, then round the Fair Haven Buoy 1FH to port, then round the inflatable orange buoy to port, round ABYRA C racing mark to port and finish at CR1.

The approximate position of each mark is as follows:

CR1	42° 35.65'	82° 44.73'
C	42° 38.64'	82° 45.31'
Inflatable	42° 39.91'	82° 41.66'
1FH	42° 40.06'	82° 38.49'

**Not For Navigation**



## **9. STARTING RACES**

RRS 26 is unchanged.

## **10. POSTPONEMENT OR ABANDONMENT BEFORE THE START**

RRS 27.3 is unchanged.

## **11. LIFE JACKETS**

RRS 40 is changed as follows. With the prediction by NOAA or the presence of 20 knots of wind at the commencement of the start sequence, the race committee may conspicuously display within its rigging a personal flotation device (PFD) or the code flag Y. This does not mandate the use of PFDs, but instead suggests that the expected conditions warrant the use of PFDs by each race participant.

## **12. INDIVIDUAL RECALL**

RRS 29.1 is unchanged. Broadcast of recalled sail numbers on VHF Channel 72 may also be used, but is not required.

## **13. GENERAL RECALL**

RRS 29.2 is changed as follows. If the race committee signals a general recall (display flag First Substitute with two sounds), the recalled class shall re-start after all other classes have started. Broadcast of the recall notice on VHF Channel 72 may also be used, but is not required.

## **14. SHORTENING OR ABANDONMENT AFTER THE START**

RRS 32.1 is unchanged.

## **15. TIME LIMIT**

The time limit for each start is four hours. If any boat in a start finishes within the time limit, the race shall stand for all other boats in that start, except that any boat that fails to finish within 30 minutes after the first boat in that same start will be scored "Time Limit Expired (TLE)".